

# CERTIFICATE OF LOCATION OF GOVERNMENT CORNER

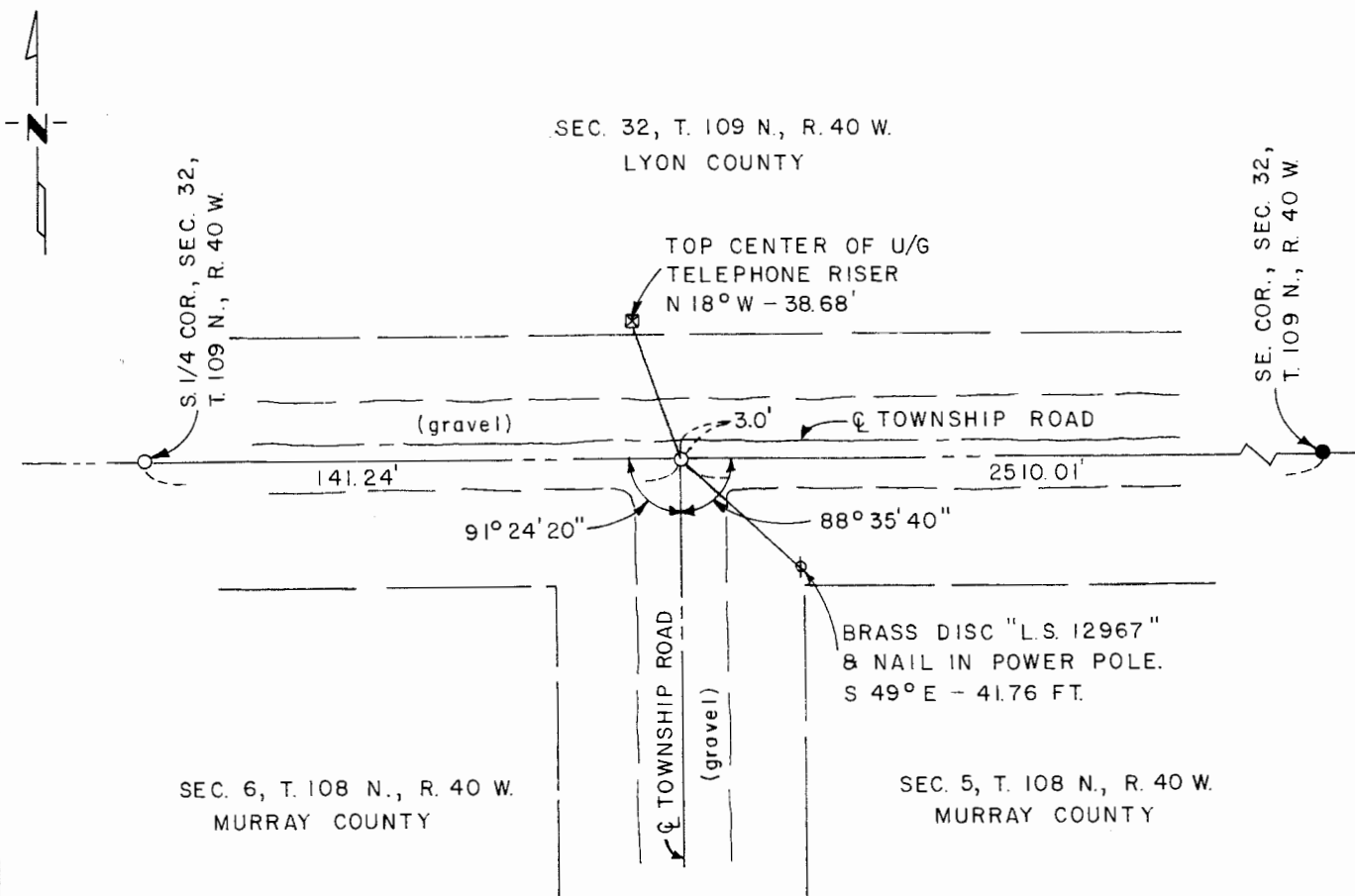
Northeast Corner of Section 6, Township 108 N., Range 40 W., 5 th P.M.

STATE OF MINNESOTA, County of Murray

At the corner location shown on the sketch:

- On \_\_\_\_\_ found a \_\_\_\_\_  
DATE
- left monument as found,  lowered monument,  removed monument (explain)
- On Oct. 7, 1980 placed a 1/2" iron reinforcing bar with "L.S. 12967" cap  
DATE

### SKETCH OF REFERENCE TIES



I hereby certify that this document and the data contained herein was prepared by me or under my direct supervision.

*[Signature]*  
SIGNATURE

12/28/84  
DATE

Registration No. 12967

- Land Surveyor,  Professional Engineer
- County Surveyor,  County Engineer

### OFFICE OF THE COUNTY RECORDER

County of Murray

I hereby certify that this document was filed in the Co. Recorders office at 10 A. .M. on the 18th day of February A.D., 1982

County Recorder *[Signature]*

By \_\_\_\_\_, Deputy

DOCUMENT NO. \_\_\_\_\_